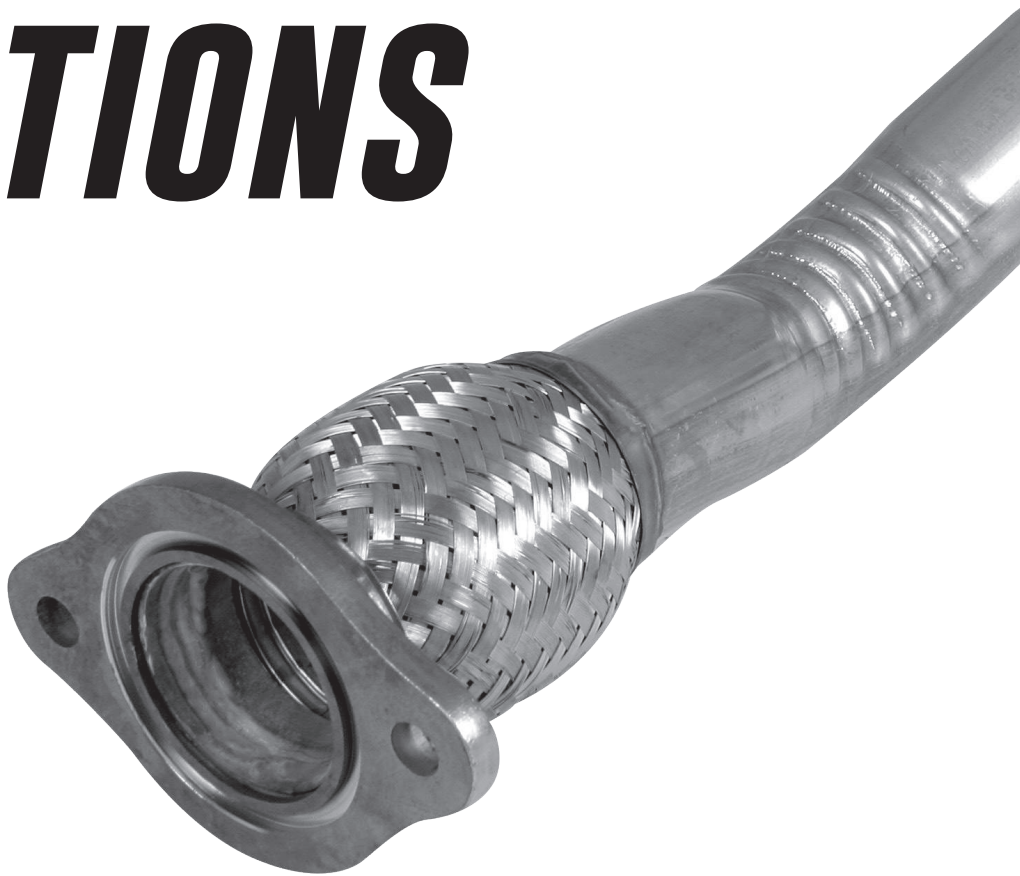




FLEX PIPE SOLUTIONS



FLEX & REPAIR EXHAUST PIPES

Sorted from Newest to
Oldest Application

Sorted by Manufacturer, then Model,
then from Newest to Oldest Application

GENERAL MOTORS

121686

Inlet - 4 Bolt Flange
Outlet - 1 3/4" I.D.
O.A.L. - 4 1/4"
Gasket 9054

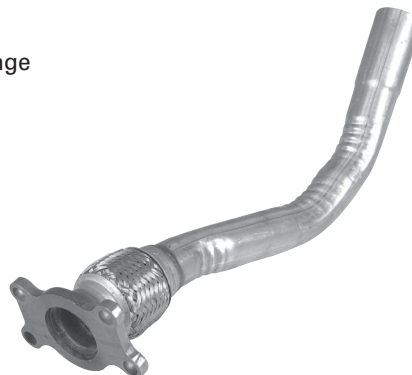


- 96-98 BUICK Skylark 2.4L
- 96-98 CHEV Cavalier, 97-98 Malibu 2.4L
- 96-98 OLDS Achieva 2.4L
- 96-98 PONT Grand Am, Sunfire 2.4L

With Inner Braid Flex

122625

Inlet - 4 Bolt Flange
Outlet - 1 3/4" I.D.
O.A.L. - 20"
Gasket 9054



- 96-98 BUICK Skylark 2.4L AT
- 96-98 OLDS Achieva 2.4L AT
- 96-98 PONT Grand Am 2.4L AT

With Inner Braid Flex

121687

Inlet - 2 Bolt Flange
Outlet - 1 3/4" I.D.
O.A.L. - 4 5/8"
Gasket 9238



- 96-97 CHEV S10 Pickup 2.2L
- 96-97 GMC S15 Sonoma Pickup 2.2L
- 96-97 ISUZU Hombre 2.2L

With Inner Braid Flex

GEO/SUZUKI

122617

Inlet - 3 Bolt, Dual Inlet Flange
Outlet - 2 1/4" O.D.
O.A.L. - 21"
Gasket 8734



- 89-94 GEO Truck Tracker
- 89-94 SUZUKI Truck Tracker

TOYOTA

122630

Inlet - 3 Bolt, Dual Inlet Flange
Outlet - 2" O.D.
O.A.L. - 17 3/4"
Gasket 8749 (2 required)



- 91-95 TOYOTA Truck Previa

With Inner Braid Flex

VOLKSWAGEN

121689

Inlet - 6 Bolt, Dual Inlet Flange
Outlets - 1 3/4" I.D.
O.A.L. - 3 3/4"
Gasket 9213



- 87-92 VW Jetta & Golf 1.8L
- 98-01 VW Beetle 2.0L AEG Eng
- 99-01 VW Golf 2.0L AEG Eng
- 99-01 VW Jetta 2.0L AEG Eng

FLEX & REPAIR EXHAUST PIPES

Sorted from Newest to
Oldest Application

MAX FIT[®]

with Mandrel Options

CHRYSLER/DODGE/PLYMOUTH

121683

Inlet - 4 Bolt Flange
Outlet - 2 ½" O.D.
O.A.L. - 6"
Gasket 9289



- 00-05 DODGE/PLYM Neon 2.0L
- 96-07 CHRYS Town & Country,
DODGE Caravan Plymouth Voyager 3.3L & 3.8L
- 01-03 CHRYS Voyager 2.4L
- 01-07 DODGE Caravan 2.4L
- 01-10 CHRYS PT Cruiser 2.4L
- 05-08 CHRYS Pacifica 3.8L

With Inner Lock Flex (Inner Heat Shield)

121681

Inlet - 4 Bolt Flange
Outlet - 2 ¼" O.D.
O.A.L. - 8 ½"
Gasket 9289



- 95-06 CHRYS Cirrus, Sebring 2.4L & 2.5L
- 95-06 DODGE Stratus 2.0L, 2.4L & 2.5L
- 98-00 PLYM Breeze 2.0L & 2.4L

121682

Inlet - 4 Bolt Flange
Outlet - 2 ½" O.D.
O.A.L. - 5 ¾"
Gasket 9013



- 96-00 DODGE Caravan PLYM Voyager 3.0L

With Inner Lock Flex (Inner Heat Shield)

FORD/LINCOLN/MERCURY

121690

Inlet - 2 Bolt Flange
Outlet - 2" I.D.
O.A.L. - 5 7/16"
Gasket 9059



- 00-07 FORD Taurus 3.0L
- 96-98 MERC Sable 3.0L

With Inner Braid

121685

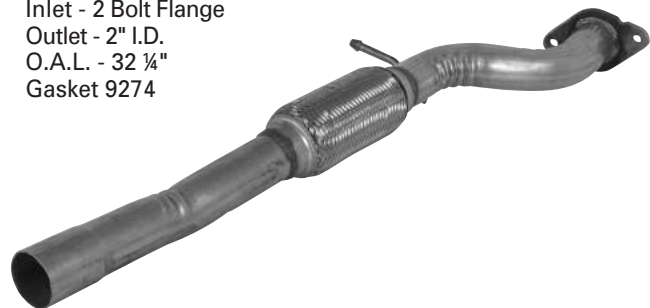
Inlet - 4 Bolt Flange
Outlet - 3" O.D.
O.A.L. - 9 ½"
Gasket 9245



- 87-95 FORD Truck E-Series
- 87-99 FORD Truck F-Series

123529

Inlet - 2 Bolt Flange
Outlet - 2" I.D.
O.A.L. - 32 ¼"
Gasket 9274



- 95-97 FORD Contour 2.0L
- 95-97 MERC Mystique 2.0L

FLEX & REPAIR EXHAUST PIPES

Sorted from Newest to
Oldest Application

Sorted by Manufacturer, then Model,
then from Newest to Oldest Application

GENERAL MOTORS

121691

Inlet - 3 Bolt Flange
Outlet - 2 3/32" I.D.
O.A.L. - 4"
Gasket 8403



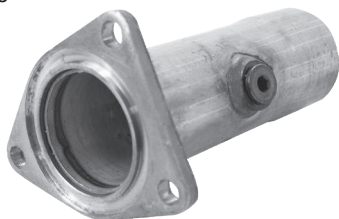
- 02-05 CHEV/PONT Cavalier/Sunfire 2.2L (02 Code F)
- 05-10 CHEV Cobalt 2.2L
- 06-08 CHEV Cobalt 2.4L
- 06-11 CHEV HHR 2.2L & 2.4L
- 04-05 CHEV Malibu Classic 2.2L
- 02-04 OLDS Alero 2.2L

With Inner Braid Flex

- 07-09 PONTIAC G5 2.2L & 2.4L
- 02-05 PONTIAC Grand Am 2.2L
- 03-07 SATURN Ion 2.2L
- 06-07 SATURN Ion 2.4L
- 01-04 SATURN L100 L200 LW200 2.2L A/T
- 02-06 SATURN Vue 2.2L

121692

Inlet - 3 Bolt Flange
Outlet - 2 1/2" I.D.
O.A.L. - 7 1/2"
Gasket 8762



- 99-06 GM Truck 4.3L Engine Left
- 99-05 GM Truck 4.8L Engine Left
- 99-05 GM Truck 5.3L Engine Left

122621

Inlet - 2 Bolt Flange
Outlet - 2 1/16" O.D.
O.A.L. - 19 1/2"
Gasket 9088



- 97-04 BUICK Regal 3.8L
- 00-05 CHEV Impala, Monte Carlo 3.8L
- 98-99 OLDS Intrigue 3.8L
- 97-03 PONT Grand Prix 3.8L

With Inner Braid Flex

123532

Inlet - 2 Bolt Flange
Outlet - 2 1/4" O.D.
O.A.L. - 25"
Gasket 8762



- 98-03 CHEV Malibu 3.1L
- 99-04 OLDS Alero 3.4L
- 98-99 OLDS Cutlass 3.1L
- 99-04 PONT Grand Am 3.4L

With Inner Braid Flex

122624

Inlet - 2 Bolt Flange
Outlet - 2 1/4" O.D.
O.A.L. - 20 1/2"
Gasket 8762



- 97-04 BUICK Century 3.1L
- 00-04 CHEV Impala, Monte Carlo 3.4
- 97-01 CHEV Lumina 3.1L
- 97-04 PONT Grand Prix 3.1L

FLEX & REPAIR EXHAUST PIPES

Sorted from Newest to
Oldest Application

GENERAL MOTORS

121688

Inlet - 3 Bolt Flange
Outlet - 1 3/4" I.D.
O.A.L. - 4 1/2"
Gasket 8731



98-03 CHEV S10 Pickup 2.2L
98-03 GMC S15 Sonoma Pickup 2.2L

With Inner Braid Flex

122618

Inlet - 3 Bolt Flange
Outlet - 2" O.D.
O.A.L. - 23 1/2"
Gasket 9207



99-02 CHEV Cavalier 2.4L
99-00 CHEV Malibu 2.4L
99-01 PONT Grand Am 2.4L
99-02 PONT Sunfire 2.4L
99-01 OLDS Alero 2.4L

122622

Inlet - 2 Bolt Flange
Outlet - 2 1/4" O.D.
O.A.L. - 23 1/2"
Gasket 8762



2001 CHEV Venture 3.4L
2001 OLDS Silhouette 3.4L
2001 PONT Montana 3.4L

123530

Inlet - 2 Bolt Flange
Outlet - 2 1/4" O.D.
O.A.L. - 26 1/2"
Gasket 8762



97-00 CHEV Venture 3.4L
97-00 OLDS Silhouette 3.4L
99-00 PONT Montana 3.4L
97-98 PONT Transport 3.4L

122619

Inlet - 4 Bolt Flange
Outlet - 1 3/4" I.D.
O.A.L. - 21"
Gasket 9054

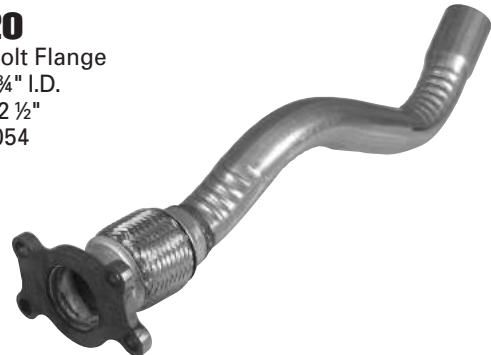


96-98 CHEV Cavalier / Pontiac Sunfire 2.4L
97-98 CHEV Malibu 2.4L

With Inner Braid Flex

122620

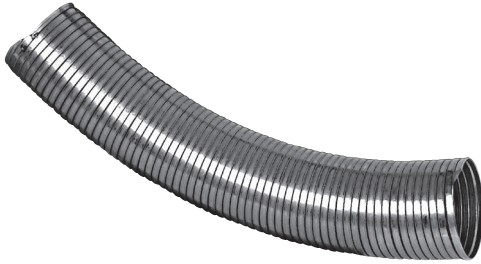
Inlet - 4 Bolt Flange
Outlet - 1 3/4" I.D.
O.A.L. - 22 1/2"
Gasket 9054



96-98 CHEV Cavalier / Pontiac Sunfire 2.4L
97-98 CHEV Malibu 2.4L

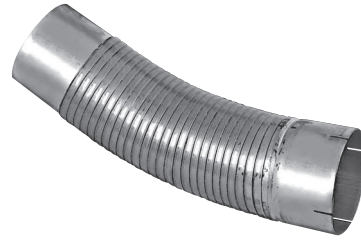
Without Inner Braid Flex

PRE-CUT FLEX HOSE STYLE ID-ID



P/N STAINLESS	P/N ALUMINIZED	P/N GALVANIZED	LGTH.
3" DIA			
24675	—	24752	18"
—	—	24930	24"
—	—	34826	36"
3½" DIA			
24676	—	24753	18"
—	—	24849	24"
—	—	34785	36"
4" DIA			
14739	—	14738	12"
24677	24931	24754	18"
24836	—	24835	24"
34673	—	34743	36"
—	—	44786	48"
64791	—	64793	72"
5" DIA			
14737	—	14740	12"
24678	24933	24755	18"
24838	—	24837	24"
34674	—	34744	36"
44867	—	54831	48"
64792	—	64794	72"

PRE-CUT FLEX HOSE STYLE ID-OD



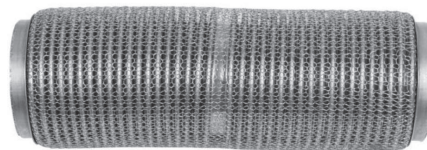
P/N STAINLESS	P/N GALVANIZED	LGTH.
3" DIA		
—	24674	18"
3½" DIA		
—	24935	18"
4" DIA		
—	24654	18"
5" DIA		
—	24936	18"

STAINLESS STEEL BELLOWS PIPE



P/N	DIA	LGTH.
9726	3"	12"
9727	3½"	12"
9728	4"	12"
9729	5"	12"

HEAVY DUTY FORD F750 FLEX BELLOW



P/N	CROSS-SECTION	OAL
28819	5" OD x 4" ID	14½"

FLEXIBLE TUBING ACCESSORIES



PROCEDURE FOR CUTTING FLEXIBLE TUBING

NOTE: Flexible tubing coils are in a contracted state. Before cutting, anchor one end and pull and/or snap the coil to bring it back to its proper length.

HACKSAW: (For less frequent cutting)

WIDTH: ½" or ¾"

TEETH: A no set blade is preferred, although it is usually hard to find locally - 14 tooth or finer.

BANDSAW: (For less frequent cutting)

WIDTH: ½" or ¾"

TEETH: A no set blade - 14 tooth, run at 350 feet per minute.

A bi-metal blade gives more cuts per dollar than an ordinary carbon steel blade.

Lenox seems to be the best blade for our applications.



FLEX TUBING 10 FOOT LENGTHS

P/N STAINLESS STANDARD THICKNESS	P/N ALUMINIZED HEAVY DUTY THICKNESS	P/N GALVANIZED HEAVY DUTY THICKNESS	ID
8883	—	8984	2"
8855	—	—	2 ¼"
8884	8858	8985	2 ½"
8885	8859	8986	3"
8886	8876	8987	3 ½"
8887	8856	8988	4"
8888	8857	8989	5"
8895	—	8990	6"
—	—	8893	8"
—	—	8894	10"

FLEX TUBING 25 FOOT LENGTHS

P/N STAINLESS STANDARD THICKNESS	P/N GALVANIZED STANDARD THICKNESS	P/N GALVANIZED HEAVY DUTY THICKNESS	ID
—	8860	—	1"
—	8861	—	1 ⅛"
—	8862	—	1 ¼"
—	8863	—	1 ⅜"
—	8864	—	1 ½"
—	8865	—	1 ⅝"
—	8866	—	1 ¾"
—	8867	—	1 ⅞"
—	8868	—	2"
—	8869	—	2 ⅛"
—	8870	—	2 ¼"
—	8872	—	2 ½"
8982	8875	8880	3"
8983	—	8881	3 ½"
8878	—	8882	4"
8879	—	8877	5"
8899	—	8898	6"

FLEX COUPLING ACCESSORIES

FEATURES	(VALUE)	(PREMIUM)
	200 STAINLESS	300 STAINLESS
2 Ply Bellows for Max Strength	✓	✓
Seamless Convolute Inner core to prevent leaks	✓	✓
Reduces Vibration Stress Fatigue	✓	✓
Inner Braid Option Adds Longer Life	✓	✓
Large 3" Diameter for Heavy Duty & Perf. Applications		✓
Longest Life for Maximum Corrosion Protection		✓
Highest Temperature Resistance to Fatigue		✓

	200 SERIES W/ INNER BRAID	300 SERIES W/O INNER BRAID	300 SERIES W/ INNER BRAID	INLET DIAMETER	OVERALL LENGTH	FLEX LENGTH
WITHOUT NIPPLE EXTENSION	FT13404B	8810	8810IB	1.77"	4"	4"
	FT13406B	8811	8811IB	1.77"	6"	6"
	FT13408B	8812	8812IB	1.77"	8"	8"
	FT13410B	8813	8813IB	1.77"	10"	10"
	FT20004B	8814	8814IB	2.02"	4"	4"
	FT20006B	8815	8815IB	2.02"	6"	6"
	FT20008B	8816	8816IB	2.02"	8"	8"
	FT20010B	8817	8817IB	2.02"	10"	10"
	FT22504B	8818	8818IB	2.27"	4"	4"
	FT22506B	8819	8819IB	2.27"	6"	6"
	FT22508B	8820	8820IB	2.27"	8"	8"
	FT22510B	8821	8821IB	2.27"	10"	10"
	FT25004B	8822	8822IB	2.52"	4"	4"
	FT25006B	8823	8823IB	2.52"	6"	6"
	FT25008B	8824	8824IB	2.52"	8"	8"
	FT25010B	8825	8825IB	2.52"	10"	10"
	—	8826	8826IB	3.02"	4"	4"
	—	8827	8827IB	3.02"	6"	6"
	—	8828	8828IB	3.02"	8"	8"
	—	8829	8829IB	3.02"	10"	10"
	—	8831	8831IB	3.52"	8"	8"
WITH NIPPLE EXTENSION	FT13404N	8835	8835IB	1.75"	8"	4"
	FT13406N	8836	8836IB	1.75"	10"	6"
	FT13408N	8837	8837IB	1.75"	12"	8"
	FT13410N	8838	8838IB	1.75"	14"	10"
	FT20004N	8839	8839IB	2.00"	8"	4"
	FT20006N	8840	8840IB	2.00"	10"	6"
	FT20008N	8841	8841IB	2.00"	12"	8"
	FT20010N	8842	8842IB	2.00"	14"	10"
	FT22504N	8843	8843IB	2.25"	8"	4"
	FT22506N	8844	8844IB	2.25"	10"	6"
	FT22508N	8845	8845IB	2.25"	12"	8"
	FT22510N	8846	8846IB	2.25"	14"	10"
	FT25004N	8847	8847IB	2.50"	8"	4"
	FT25006N	8848	8848IB	2.50"	10"	6"
	FT25008N	8849	8849IB	2.50"	12"	8"
	FT25010N	8850	8850IB	2.50"	14"	10"
	—	8851	8851IB	3.00"	8"	4"
	—	8852	8852IB	3.00"	10"	6"
	—	8853	8853IB	3.00"	12"	8"
	—	8854	8854IB	3.00"	14"	10"



- ✓ Complete Coverage
- ✓ Available with or without Expandable Nipple Extensions
- ✓ Available with Inner Braid



FLEX PIPE SOLUTIONS

FLEX PIPE SOLUTIONS

CHRYSLER / DODGE / PLYMOUTH

121681
Gasket 9289



1995-00 Chrysler Cirrus, Sebring 2.4L & 2.5L
1995-00 Dodge Stratus 2.0L, 2.4L & 2.5L
1998-00 Plymouth Breeze 2.0L & 2.4L

121682
Gasket 9013



642951
1996-99 Dodge Caravan
Plymouth Voyager 3.0L
With Inner Lock Flex (Inner Heat Shield)

121683
Gasket 9289



1996-00 Chrysler Town & Country, Dodge Caravan,
Plymouth Voyager 3.3L & 3.8L
2000-02 Dodge Neon 2.0L
With Inner Lock Flex (Inner Heat Shield)

FORD / LINCOLN / MERCURY

28363
Gasket 9079



90-97 Ford Aerostar 3.0L & 4.0L

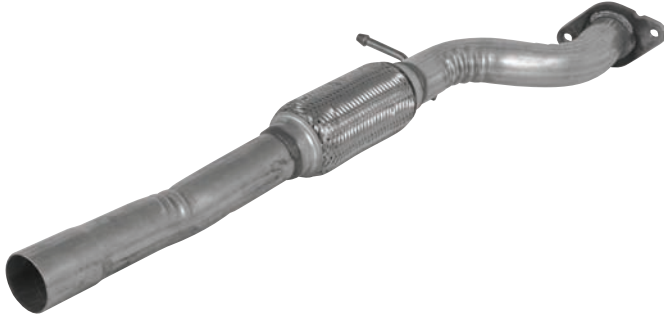
18177
Inlet & Outlet
Gasket 8728



1995-00 Ford Contour 2.5L w/ AT
1995-00 Mercury Mystique 2.5L w/ AT

FORD / LINCOLN / MERCURY

123529
Gasket 9274



1995-97 Ford Contour 2.0L
1995-97 Mercury Mystique 2.0L

28436



1992-96 Ford E150 / E250 Van 5.0L

121685
Gasket 9245



1987-95 Ford E-Series
1987-99 Ford F-Series

28337
Inlet & Outlet
Gasket 8689



1990-92 Ford Probe 3.0L

28453
Inlet Gasket 9255
Outlet Gasket 9256



1988-92 Ford Probe, 2.2L A/T *also fits Mazda*

28569
Gasket 9288



1996-99 Ford Taurus 3.0L
1996-99 Mercury Sable 3.0L

FLEX PIPE SOLUTIONS

FORD / LINCOLN / MERCURY

28365
Gasket 9079



1991-95 Ford Taurus 3.8L
1994-95 Ford Taurus 3.0L
1990-94 Lincoln Continental 3.8L
1991-95 Mercury Sable 3.8L
1994-95 Mercury Sable 3.0L

28545
Gasket 9079



1995-03 Ford Windstar 3.8L
1995-00 Ford Windstar 3.0L

GEO

122617
Gasket 8734



1989-94 Geo Tracker *also fits Suzuki*

GM

122618
Gasket 9207



1999-02 Chevrolet Cavalier 2.4L
1999-00 Chevrolet Malibu 2.4L
1999-01 Pontiac Grand Am 2.4L
1999-02 Pontiac Sunfire 2.4L
1999-01 Oldsmobile Alero 2.4L

121686
Gasket 9054



1996-98 Buick Skylark 2.4L
1996-98 Chevrolet Cavalier, 97-98 Malibu 2.4L
1996-98 Oldsmobile Achieva 2.4L
1996-98 Pontiac Grand Am, Sunfire 2.4L
with Inner Braid Flex

122619
Gasket 9054



1996-98 Chevrolet Cavalier / Pontiac Sunfire 2.4L
1997-98 Chevrolet Malibu 2.4L
With Inner Braid Flex

122620
Gasket 9054



1996-98 Chevrolet Cavalier / Pontiac Sunfire 2.4L
1997-98 Chevrolet Malibu 2.4L
Without Inner Braid Flex

122625
Gasket 9054



1996-98 Buick Skylark 2.4L AT
1996-98 Oldsmobile Achieva 2.4L AT
1996-98 Pontiac Grand Am 2.4L AT
With Inner Braid Flex

122621
Gasket 9088



1997-03 Buick Regal 3.8L
2000-03 Chevrolet Impala, Monte Carlo 3.8L
1998-99 Oldsmobile Intrigue 3.8L
1997-03 Pontiac Grand Prix 3.8L
With Inner Braid Flex

122622
Gasket 8762



2001 Chevrolet Venture 3.4L
2001 Oldsmobile Silhouette 3.4L
2001 Pontiac Montana 3.4L

122623
Gasket 9088



1998-99 Chevrolet Lumina, Monte Carlo 3.8L

FLEX PIPE SOLUTIONS

GM

123530
Gasket 8762



1997-00 Chevrolet Venture 3.4L
1997-00 Oldsmobile Silhouette 3.4L
1999-00 Pontiac Montana 3.4L
1997-98 Pontiac Transport 3.4L

122624
Gasket 8762



1997-04 Buick Century 3.1L
2000-04 Chevrolet Impala, Monte Carlo 3.4L
1997-03 Pontiac Grand Prix 3.1L

121687
Gasket 9238



1996-97 Chevrolet S10 Pickup 2.2L
1996-97 GMC S15 Sonoma Pickup 2.2L
1996-97 Isuzu Hombre 2.2L

With Inner Braid Flex

93993 Full Pipe
Inlet Gasket 9238
Outlet Gasket 9283



1996-97 Chevrolet S10 Pickup 2.2L
1996-97 GMC S15 Sonoma Pickup 2.2L
1996-97 Isuzu Hombre 2.2L

123532
Gasket 8762



1998-03 Chevrolet Malibu 3.1L
1999-04 Oldsmobile Alero 3.4L
1998-99 Oldsmobile Cutlass 3.1L
1999-03 Pontiac Grand Am 3.4L

With Inner Braid Flex

121688
Gasket 8731



1998-00 Chevrolet S10 Pickup 2.2L
1998-00 GMC S15 Sonoma Pickup 2.2L

With Inner Braid Flex

GM

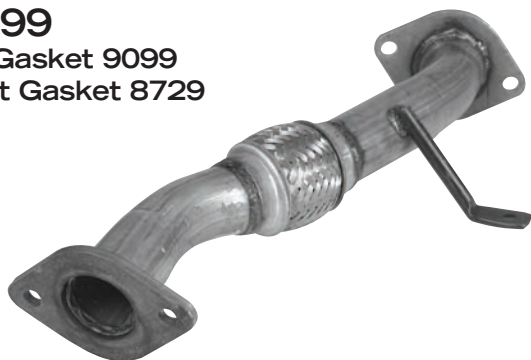
93994 Full Pipe
Inlet Gasket 8731
Outlet Gasket 9283



1998-00 Chevrolet S10 Pickup 2.2L
1998-00 GMC S15 Sonoma Pickup 2.2L

NISSAN

28399
Inlet Gasket 9099
Outlet Gasket 8729



1990-95 Nissan Pickup 2.4L

TOYOTA

122630
Gasket 8749(2)



1991-95 Toyota Previa
With Inner Braid Flex

MAZDA

28453
Inlet Gasket 9255
Outlet Gasket 9256



1988-92 Mazda 626, MX-6 2.2L exc. 88-89 M/T
also fits Ford

SUZUKI

122617
Gasket 8734



1989-94 Suzuki Sidekick

VOLKSWAGEN

121689



1987-92 Volkswagen Jetta & Golf 1.8L

FLEX PIPE SOLUTIONS

FLEX COUPLING

- Complete Coverage
- Constructed with 2-Ply Bellows
- Designed with a Seamless, Convolute Inner Core to Prevent Exhaust Leaks
- Increased Flexibility Reduces Vibrations
- Available with or without Expandable Nipple Extensions
- Available with Inner Braid



WITHOUT NIPPLE EXTENSION

P/N W/O INNER LINER	P/N WITH INNER BRAID	FLEX LENGTH	OVERALL LENGTH	INLET DIAMETER
8810	8810IB	4"	4"	1.77"
8811	8811IB	6"	6"	1.77"
8812	8812IB	8"	8"	1.77"
8813	8813IB	10"	10"	1.77"
8814	8814IB	4"	4"	2.02"
8815	8815IB	6"	6"	2.02"
8816	8816IB	8"	8"	2.02"
8817	8817IB	10"	10"	2.02"
8818	8818IB	4"	4"	2.27"
8819	8819IB	6"	6"	2.27"
8820	8820IB	8"	8"	2.27"
8821	8821IB	10"	10"	2.27"
8822	8822IB	4"	4"	2.52"
8823	8823IB	6"	6"	2.52"
8824	8824IB	8"	8"	2.52"
8825	8825IB	10"	10"	2.52"
8826	8826IB	4"	4"	3.02"
8827	8827IB	6"	6"	3.02"
8828	8828IB	8"	8"	3.02"
8829	8829IB	10"	10"	3.02"

WITH NIPPLE EXTENSION

P/N W/O INNER LINER	P/N WITH INNER BRAID	FLEX LENGTH	OVERALL LENGTH	INLET DIAMETER
8835	8835IB	4"	8"	1.75"
8836	8836IB	6"	10"	1.75"
8837	8837IB	8"	12"	1.75"
8838	8838IB	10"	14"	1.75"
8839	8839IB	4"	8"	2.00"
8840	8840IB	6"	10"	2.00"
8841	8841IB	8"	12"	2.00"
8842	8842IB	10"	14"	2.00"
8843	8843IB	4"	8"	2.25"
8844	8844IB	6"	10"	2.25"
8845	8845IB	8"	12"	2.25"
8846	8846IB	10"	14"	2.25"
8847	8847IB	4"	8"	2.50"
8848	8848IB	6"	10"	2.50"
8849	8849IB	8"	12"	2.50"
8850	8850IB	10"	14"	2.50"
8851	8851IB	4"	8"	3.00"
8852	8852IB	6"	10"	3.00"
8853	8853IB	8"	12"	3.00"
8854	8854IB	10"	14"	3.00"

