

silverline™

performance exhaust



DIESEL PERFORMANCE EXHAUST



NEW FROM silverline
performance exhaust

**ALUMINIZED AND STAINLESS STEEL EXHAUST
KITS WITHOUT MUFFLERS AND STACK
IN-BED BASE KITS FOR 5" EXHAUST**



**5" IN-BED SINGLE & DUAL
STACKBASE KITS**

Designed for use with any 5" exhaust system. Made from High Quality Aluminized Steel and Black Textured Powder Coated to enhance appearance and durability. Complete with clamps and installation hardware.

NOW AVAILABLE!

**DIESEL PERFORMANCE EXHAUST
KITS WITHOUT MUFFLERS!**

- New "NM" series in 4" & 5" diameters
- Offered in High Quality Aluminized or 409 Stainless Steel.
- Available for all popular makes and models.

See Pages 7-11 for details!

Detail of Texture

TABLE OF CONTENTS

- 2** Silverline Choice
- 6** Light Diesel Truck Systems
- 12** Light Diesel Stack Systems
- 18** Light Diesel Mufflers, Pipes & Accessories
- 24** Light Diesel Truck Tips



The Silverline™ Choice

THE SILVERLINE™ CHOICE

Silverline™ Performance Exhaust Systems are designed to improve vehicle performance by generating more horsepower and torque. Using precise measurements, the mandrel-bent tubing and increased pipe diameter ensure optimum exhaust flow for all Silverline vehicle-specific applications. Brought to you by ANSA, with over 50 years of exhaust experience, Silverline™ products offer innovative solutions for the Diesel Light Truck and Sport Compact markets!



TIPS AND ACCESSORIES

Rounding out the Silverline range is a comprehensive offering of universal stainless steel tips for import and domestic light trucks, cars and specialty applications. Featuring top quality materials in either bolt-on or weld-on styles, we offer an extensive range of styles in a variety of finishes – including chromed. With the recent addition of ANSA® and Silverline™ brands to the AP Exhaust Technologies Group, the company now



brings a complete solution for performance exhaust customization to the professional installer market. AP's Xlerator® brand of performance products offers an extensive range of universal performance mufflers, glasspacks and accessories, as well as mandrel-bent and Max-Fit exhaust systems for gas trucks and popular muscle cars.



PERFORMANCE OPTIONS FOR LIGHT DIESEL TRUCKS

Offering one of the broadest selections of exhaust upgrades for the Light Diesel Truck market, Silverline™ Systems are available in three material grades; T304 and 409 Stainless Steel, plus a more economical Aluminized Steel version. All dual and single stainless steel exhaust kits are supplied with a T304 stainless tip, while the aluminized kit can be customized by selecting from our array of chrome or stainless tips in a variety of sizes and styles. All Silverline Systems are designed to bolt-on and include pre-welded hangers and hardware to ensure a hassle-free installation.

For the Diesel Enthusiast, the Silverline™ Diesel Muffler is the key to the aggressive sound associated with these exhaust systems. With a free flow design, the strategically placed louvers provide sound-deadening control for a more pleasant in-cab ride, while still allowing the deep, rich sound of the diesel engine during acceleration.



For that "Big Rig" look, consider Silverline™ Stack systems. Universal single or dual in-bed stack bases are available for 4" and 5" systems and can be topped with a variety of stack outlet designs and finishes – all available from Silverline. Base units are supplied with detailed installation instructions and necessary hardware, and are recommended for professional installation.

silverline™

performance exhaust



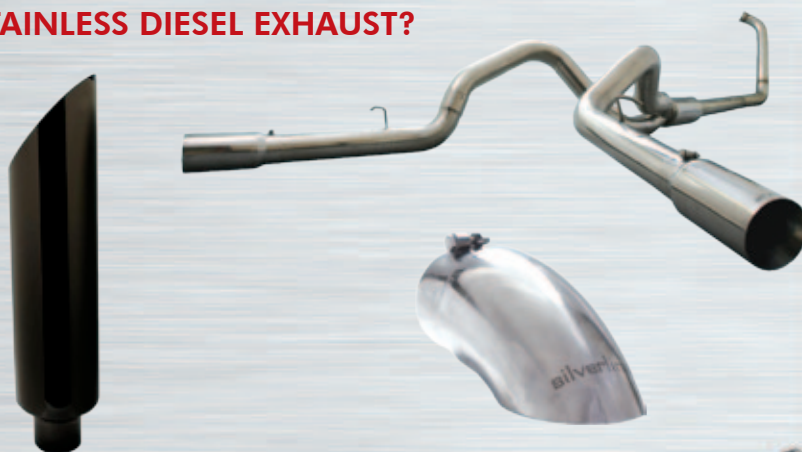
THREE STEEL TYPES: WHAT IS THE DIFFERENCE?

Silverline offers three types of diesel exhaust systems, the T304 Series, the 409 Series and Aluminized. While similar in design, there are differences in the raw material used to construct the systems. The four main variables purchasers should be aware of include: corrosion resistance, temperature endurance, finish quality and price. For the diesel owner who only wants the best, top of the line T304 stainless steel offers superior resistance to corrosion, can be polished to a mirror bright finish and is able to withstand high levels of heat. The Silverline 409 stainless series is value-priced and a type of steel used in exhaust manufacturing for many years. Aluminized steel is lighter both in color and in weight than stainless steel and is priced lower than the other Silverline systems. All Silverline stainless diesel exhaust kits come with highly polished premium stainless tip(s).

STEEL TYPE	DESCRIPTION	CORROSION RESISTANCE	RESIST HEAT SCALING	FINISH CAPABILITIES	LIST PRICE
T304 Stainless	Austenitic grade stainless, 18% chromium & 8% nickel	Best	Best (1650°F)	Mirror-like polish	\$900-1,800
409 Stainless	Ferritic grade stainless, 19% chromium	Better	Better (1450°F)	Matte polish	\$600-1,100
Aluminized	High-gauge sheet metal coated with an aluminum/silicon alloy coating	Good	Good (1250°F)	Light satin finish	\$500-800

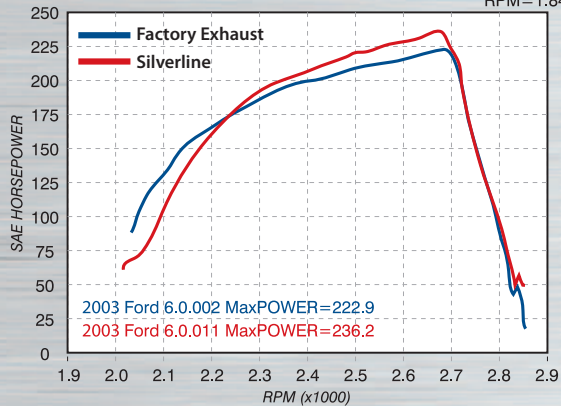
WHY CHOOSE SILVERLINE™ STAINLESS DIESEL EXHAUST?

- Enhanced sound
- Improved appearance
- Increased performance
- Extended life of the exhaust
- Stainless steel tip included
- Better fuel mileage
- Lower exhaust gas temperatures

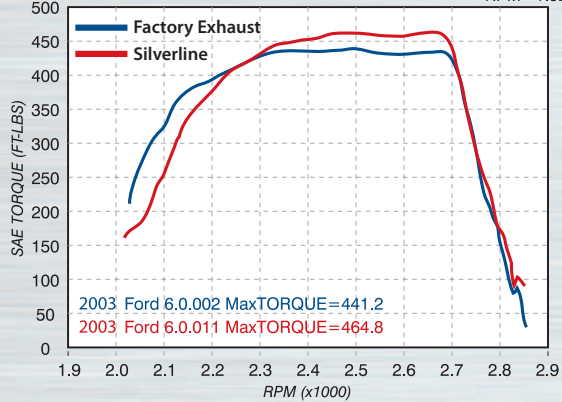


PROVEN RESULTS

Diesel Performance Motorsports Mobile Dyno - (678) 878-1031
RPM=1.84



Diesel Performance Motorsports Mobile Dyno - (678) 878-1031
RPM=1.92



HORSEPOWER & TORQUE

Silverline diesel performance exhaust systems generate more horsepower and torque while reducing exhaust gas temperatures. Independently conducted dyno testing has proven that Silverline exhaust systems improve performance by as much as 13 horsepower and 23 ft. lbs. of torque!

THE FINISHING TOUCH

Each Silverline Stainless Diesel System comes with a high-polished premium stainless steel tip! The 4" systems are currently offered with a bolt-on 5" double wall tip, beveled to one finished edge. This multi-layer design helps prevent discoloration caused by extreme heat. For Diesel aluminized kits, gas truck or car applications, choose a universal stainless tip from a variety of style, sizes and finishes, including chrome over stainless.



WARRANTY COVERAGE ON SILVERLINE™ EXHAUST

All Silverline T304 Stainless Steel Diesel Systems are covered by a Limited Lifetime Warranty. All Silverline 409 Stainless Steel Systems are covered by a 5-year Limited Warranty. Aluminized Steel systems are covered with a one year warranty.

LIGHT DIESEL TRUCK SYSTEMS



CHEVY/GMC

CHEVY/GMC DURAMAX 6.6L

CAT-BACK SYSTEMS

YEAR	PART #	SYSTEM	KIT TYPE	MATERIAL
2001-2005	CS102409	4"	SINGLE Cat-back	409 Stainless
	CS104	4"	DUAL Cat-back	T304 Stainless
	CS104409	4"	DUAL Cat-back	409 Stainless
2006 - 2007	CS105409	4"	SINGLE Cat-back	409 Stainless



PERFORMANCE FEATURES

~ Dyno-proven Horsepower and Torque Gains ~

~ All Kits feature Mandrel Bent Pipe and 1-piece Tailpipes (optional 2-piece) ~

~ All Kits fit all Wheel-Bases (excluding Commercial Trucks) ~

~ All Silverline STAINLESS KITS come with T304 polished stainless tips ~

CHEVY/GMC DURAMAX 6.6L

DOWNPIPE-BACK SYSTEMS

YEAR	PART #	SYSTEM	KIT TYPE	MATERIAL
2001-2007	CS101	4"	SINGLE Downpipe-back •	T304 Stainless
	CS101409	4"	SINGLE Downpipe-back •	409 Stainless
	CS101409NM	4"	SINGLE Downpipe-back, NO muffler •	409 Stainless
	CS101A*	4"	SINGLE Downpipe-back •	Aluminized Steel
	CS101A2*	4"	SINGLE Downpipe-back, 2-pc tailpipe •	Aluminized Steel
	CS101ANM*	4"	SINGLE Downpipe-back, NO muffler •	Aluminized Steel
	CS501A*	5"	SINGLE Downpipe-back •	Aluminized Steel
	CS501ANM*	5"	SINGLE Downpipe-back, NO muffler •	Aluminized Steel
	CS103409	4"	DUAL Downpipe-back •	409 Stainless

* Tip not included - purchase separately

• FOR OFFROAD AND RACING USE ONLY! Use DCK1 or DCK2 adapter for street conversion.



CHEVY/GMC DURAMAX 6.6L

PARTICULATE-BACK SYSTEMS

YEAR	PART #	SYSTEM	KIT TYPE	MATERIAL
2008-2010	CS107409	5"	SINGLE DPF-back	409 Stainless

5" DPF-Back Systems do not have a Muffler

LIGHT DIESEL TRUCK SYSTEMS

DODGE/RAM

DODGE CUMMINS 5.9L

TURBO-BACK SYSTEMS

YEAR	PART #	SYSTEM	KIT TYPE	MATERIAL
1994-2002	DS101	4"	SINGLE Turbo-back •	T304 Stainless
	DS101409	4"	SINGLE Turbo-back •	409 Stainless
	DS101409NM	4"	SINGLE Turbo-back, NO muffler •	409 Stainless
	DS101A*	4"	SINGLE Turbo-back •	Aluminized Steel
	DS101A2*	4"	SINGLE Turbo-back, 2-pc tailpipe •	Aluminized Steel
	DS101ANM*	4"	SINGLE Turbo-back, NO muffler •	Aluminized Steel
	DS501A*	5"	SINGLE Turbo-back •	Aluminized Steel
	DS501ANM*	5"	SINGLE Turbo-back, NO muffler •	Aluminized Steel
	DS104	4"	DUAL Turbo-back •	T304 Stainless
	DS104409	4"	DUAL Turbo-back •	409 Stainless

* Tip not included - purchase separately

• **FOR OFFROAD AND RACING USE ONLY!** Use DCK1 or DCK2 adapter for street conversion.

DODGE CUMMINS 5.9L (PRE-600)

TURBO-BACK SYSTEMS

YEAR	PART #	SYSTEM	KIT TYPE	MATERIAL
2003-2004.5	DS103	4"	SINGLE Turbo-back •	T304 Stainless
	DS103409	4"	SINGLE Turbo-back •	409 Stainless
	DS103409NM	4"	SINGLE Turbo-back, NO muffler •	409 Stainless
	DS103A*	4"	SINGLE Turbo-back •	Aluminized
	DS103ANM*	4"	SINGLE Turbo-back, NO muffler •	Aluminized
		DS102	4"	DUAL Turbo-back •
	DS102409	4"	DUAL Turbo-back •	409 Stainless



* Tip not included - purchase separately

• **FOR OFFROAD AND RACING USE ONLY!** Use DCK1 or DCK2 adapter for street conversion.



PERFORMANCE FEATURES

~ Dyno-proven Horsepower and Torque Gains ~

~ All Kits feature Mandrel Bent Pipe and 1-piece Tailpipes (optional 2-piece) ~

~ All Kits fit all Wheel-Bases (excluding Commercial Trucks) ~

~ All Silverline STAINLESS KITS come with T304 polished stainless tips ~



DODGE CUMMINS 5.9L 600

TURBO-BACK SYSTEMS

YEAR	PART #	SYSTEM	KIT TYPE	MATERIAL
2004.5-2007	DS105 ◇	4"	SINGLE Turbo-back •	T304 Stainless
	DS105409 ◇	4"	SINGLE Turbo-back •	409 Stainless
	DS105409NM ◇	4"	SINGLE Turbo-back, NO muffler •	409 Stainless
	DS105A* ◇	4"	SINGLE Turbo-back •	Aluminized Steel
	DS105A2* ◇	4"	SINGLE Turbo-back, 2-pc tailpipe •	Aluminized Steel
	DS105ANM* ◇	4"	SINGLE Turbo-back, NO muffler •	Aluminized Steel
	DS107409	5"	SINGLE Turbo-back •	409 Stainless
	DS107A*	5"	SINGLE Turbo-back •	Aluminized Steel
	DS106409	4"	DUAL Turbo-back •	409 Stainless

* Tip not included - purchase separately

◇ For Mega-Cab, DCK3 required

• **FOR OFFROAD AND RACING USE ONLY!** Use DCK1 or DCK2 adapter for street conversion.

DODGE CUMMINS 6.7L 600

PARTICULATE-BACK SYSTEMS

YEAR	PART #	SYSTEM	KIT TYPE	MATERIAL
2008-2010	DS109409	5"	SINGLE Particulate-back	409 Stainless
	DS110409	4"	DUAL Particulate-back	409 Stainless

5" DPF-Back Systems do not have a Muffler

LIGHT DIESEL TRUCK SYSTEMS



FORD

FORD POWERSTROKE 7.3L

TURBO-BACK SYSTEMS

YEAR	PART #	SYSTEM	KIT TYPE	MATERIAL
1994-1997	FS100A*	4"	SINGLE Turbo-back / 3" Turbo Flange •	Aluminized Steel
1999-2002	FS101	4"	SINGLE Turbo-back •	T304 Stainless
	FS101409	4"	SINGLE Turbo-back •	409 Stainless
	FS101409NM	4"	SINGLE Turbo-back, NO muffler •	409 Stainless
	FS101A*	4"	SINGLE Turbo-back •	Aluminized Steel
	FS101A2*	4"	SINGLE Turbo-back, 2-pc tailpipe •	Aluminized Steel
	FS101ANM*	4"	SINGLE Turbo-back, NO muffler •	Aluminized Steel
	FS501A*	5"	SINGLE Turbo-back •	Aluminized Steel
	FS501ANM*	5"	SINGLE Turbo-back, NO muffler •	Aluminized Steel
	FS107409	4"	DUAL Turbo-back •	409 Stainless

* Tip not included - purchase separately

• FOR OFFROAD AND RACING USE ONLY! Use DCK1 or DCK2 adapter for street conversion.

FORD EXCURSION 7.3L

TURBO-BACK SYSTEM

YEAR	PART #	SYSTEM	KIT TYPE	MATERIAL
1999-2002	FS102409	4"	SINGLE Turbo-back •	409 Stainless

• FOR OFFROAD AND RACING USE ONLY! Use DCK1 or DCK2 adapter for street conversion.

FORD POWERSTROKE 6.0L

CAT-BACK SYSTEMS

YEAR	PART #	SYSTEM	KIT TYPE	MATERIAL
2003-2007	FS103	4"	SINGLE Cat-back	T304 Stainless
	FS103409	4"	SINGLE Cat-back	409 Stainless
	FS106	4"	DUAL Cat-back	T304 Stainless
	FS106409	4"	DUAL Cat-back	409 Stainless

PERFORMANCE FEATURES

~ Dyno-proven Horsepower and Torque Gains ~

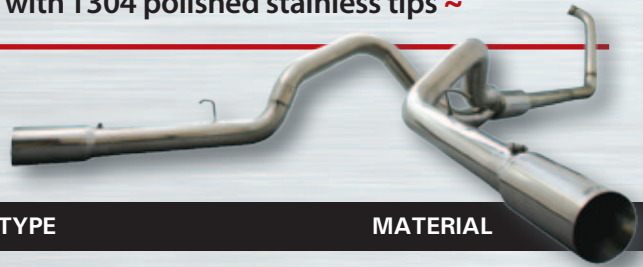
~ All Kits feature Mandrel Bent Pipe and 1-piece Tailpipes (optional 2-piece) ~

~ All Kits fit all Wheel-Bases (excluding Commercial Trucks) ~

~ All Silverline STAINLESS KITS come with T304 polished stainless tips ~

FORD POWERSTROKE 6.0L

TURBO-BACK SYSTEMS



YEAR	PART #	SYSTEM	KIT TYPE	MATERIAL
2003-2007	FS104	4"	SINGLE Turbo-back •	T304 Stainless
	FS104409	4"	SINGLE Turbo-back •	409 Stainless
	FS104409NM	4"	SINGLE Turbo-back, NO muffler •	409 Stainless
	FS104A*	4"	SINGLE Turbo-back •	Aluminized Steel
	FS104A2*	4"	SINGLE Turbo-back, 2-pc tailpipe •	Aluminized Steel
	FS104ANM*	4"	SINGLE Turbo-back, NO muffler •	Aluminized Steel
	FS504A*	5"	SINGLE Turbo-back •	Aluminized Steel
	FS504ANM*	5"	SINGLE Turbo-back, NO muffler •	Aluminized Steel
	FS105409	4"	DUAL Turbo-back •	409 Stainless

* Tip not included - purchase separately

• FOR OFFROAD AND RACING USE ONLY! Use DCK1 or DCK2 adapter for street conversion.

FORD POWERSTROKE 6.4L

PARTICULATE-BACK SYSTEMS

YEAR	PART #	SYSTEM	KIT TYPE	MATERIAL
2008-2010	FS109409	5"	SINGLE Particulate-back	409 Stainless

5" DPF-Back Systems do not have a Muffler



LIGHT DIESEL STACK SYSTEMS

UNIVERSAL IN-BED STACK BASE KITS

Made from either high quality Stainless Steel or Aluminized Steel, both with optional black powder-coated finishes, our in-bed single or dual base kits are designed and engineered for the wide range of Silverline Stacks. All stack base kits are supplied with the necessary hardware to assemble and install the base unit and attach the stack to the stack base. Stacks and stack mounting clamps are sold separately.

Detail of black powder coat



SINGLE INLET, SINGLE OUTLET BASE KITS

Supplied with all necessary clamps for base assembly and stack attachment at base

PART #	INLET SIZE	OUTLET(S) SIZE	MATERIAL
DSKUNO	4"	5"	409 Stainless with T304 Flex
DSKUN05B	5"	5"	Black Powder-Coated Aluminized with T304 Flex

Compatible stacks and mounting clamps - see pages 144 - 147



SINGLE INLET DUAL OUTLET BASE KITS

Supplied with all necessary clamps for base assembly and stack attachment at base

PART #	INLET SIZE	OUTLET(S) SIZE	MATERIAL
DSK000	4"	5"	409 Stainless with T304 Flex
DSK000B	4"	5"	Black Powder-Coated 409 Stainless with T304 Flex
DSK0005B	5"	5"	Black Powder-Coated Aluminized with T304 Flex

Compatible stacks and mounting clamps - see pages 144 - 147

4" TURBO-BACK PIPE KITS FOR STACK CONVERSIONS

For increased performance and ease of installation, these optional 4" pipe kits replace the factory front pipes, providing for a complete 4" stack exhaust system. Silverline Pipe Kits are precision manufactured and made from high quality 409 stainless steel and are compatible with all Silverline universal stack base units. Stacks and base units sold separately.



PART #	PIPE SIZE	MAKE/MODEL	YEAR
CS101409PK •	4"	Chevy Duramax 6.6	2001-2007
DS101409PK •	4"	Dodge Cummins 5.9	1994-2002
DS103409PK •	4"	Dodge Cummins 5.9	2003-2004 (pre 600)
DS105409PK •	4"	Dodge Cummins 5.9	2004-2007
FS101409PK •	4"	Ford Powerstroke 7.3	1999-2002
FS104409PK •	4"	Ford Powerstroke 6.0	2003-2007

• FOR OFFROAD AND RACING USE ONLY! Use DCK1 or DCK2 adapter for street conversion.



LIGHT DIESEL STACK SYSTEMS

STAINLESS STACKS

All Silverline stacks and stack components are made from high quality materials offering superior quality and durability. Plus, Silverline Stainless Steel Stacks are available in a choice of finishes – mirror polished stainless steel or our new and exclusive, MIDNIGHT BLACK! The 6" stack is available in angle cut or the new 30° AUSSIE style turn-out. The 8" stack is available with the popular and aggressive 45° angle cut.

New options now available in chrome, too! See pages 146-147

SLANT CUT STACKS

PART #	STACK SIZE	STACK INLET	OVERALL LENGTH	MATERIAL
DSK001	5"	5" OD	36"	T304 Polished Stainless
DSK001B	5"	5" OD	36"	T304 w/ Midnight Black
DSK004	6"	5" OD	36"	T304 Polished Stainless
DSK004B	6"	5" OD	36"	T304 w/ Midnight Black
DSK010	8"	5" OD	36"	T304 Polished Stainless
DSK010B	8"	5" OD	36"	T304 w/ Midnight Black

Stack Mounting Clamps Sold Separately



"AUSSIE STYLE" OR PIG EAR STACKS

PART #	STACK SIZE	STACK INLET	OVERALL LENGTH	MATERIAL
DSK002	5"	5" OD	36"	T304 Polished Stainless
DSK002B	5"	5" OD	36"	T304 w/ Midnight Black
DSK005	6"	5" OD	36"	T304 Polished Stainless
DSK005B	6"	5" OD	36"	T304 w/ Midnight Black

Stack Mounting Clamps Sold Separately



STAINLESS STACKS



RAINCAP

STRAIGHT- CUT STACKS

POLISHED STAINLESS RAINCAP FOR STRAIGHT-CUT STACK

PART #	STACK SIZE	STACK INLET	OVERALL LENGTH	MATERIAL
DSK003	5"	5" OD	36"	T304 Polished Stainless
DSK555	5"	Raincap for Straight Cut Stack		T304 Polished Stainless

Stack Mounting Clamps Sold Separately

MOUNTING CLAMPS FOR UNIVERSAL STACKS

MOUNTING CLAMPS FOR UNIVERSAL STACKS

FOR STABILIZATION OF STACK (S) AGAINST TRUCK BED

Clamp diameter should match stack outlet diameter

PART # (EA)	CLAMP DIAMETER	FINISH
DSK5CH	5"	Polished Stainless
DSK5CHB	5"	Midnight Black
SB500	5"	Chrome
DSK6CH	6"	Polished Stainless
DSK6CHB	6"	Midnight Black
SB600	6"	Chrome
DSK8CH	8"	Polished Stainless
DSK8CHB	8"	Midnight Black



MOUNTING CLAMP

LIGHT DIESEL STACK SYSTEMS



CHROME STACKS



ANGLED/CURVED (OD)

Part # CHROME	STACK SIZE	STACK INLET	Overall LENGTH
824723*	5" OD	5" OD	18"
824752*	5" OD	5" OD	24"
834729*	5" OD	5" OD	36"
844673*	5" OD	5" OD	48"
854729*	5" OD	5" OD	60"
864002*	5" OD	5" OD	72"
884401*	5" OD	5" OD	96"
844501*	6" OD	5" OD	48"
854601*	6" OD	5" OD	60"

* All 5" OD stacks are compatible with Silverline Universal Stack Bases

Stack Mounting Clamps Sold Separately

SLANT CUT/MITRE (OD)

Part # CHROME	STACK SIZE	STACK INLET	OVERALL LENGTH
834780*	5" OD	5" OD	36"
844005*	5" OD	5" OD	48"
854008*	5" OD	5" OD	60"
844601*	6" OD	5" OD	48"
854501*	6" OD	5" OD	60"

* All 5" OD stacks are compatible with Silverline Universal Stack Bases

Stack Mounting Clamps Sold Separately



BULL HORN (OD)

Part # CHROME	STACK SIZE	STACK INLET	OVERALL LENGTH
834897*	6"OD	5" OD	36"
844887*	6"OD	5" OD	48"
854152*	6"OD	5" OD	60"

* All 5" OD stacks are compatible with Silverline Universal Stack Bases

Stack Mounting Clamps Sold Separately

CHROME STACKS

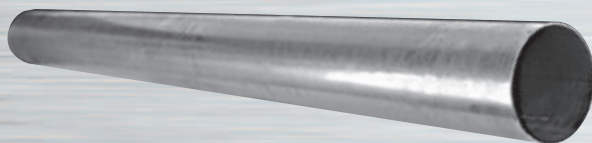


PIG EAR STACK (OD)

Part #	STACK SIZE	STACK INLET	OVERALL LENGTH
824501 *	5"OD	5"OD	24"
854701 *	5"OD	5"OD	60"
844701 *	6"OD	5"OD	48"

* All 5" OD stacks are compatible with Silverline Universal Stack Bases

Stack Mounting Clamps Sold Separately



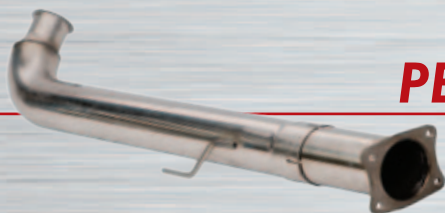
SQUARE CUT (OD)

Part #	Part #	STACK SIZE	STACK INLET	OVERALL LENGTH
—	834709 *	5" OD	5" OD	36"
44659 *	844664 *	5" OD	5" OD	48"
54985 *	854717 *	5" OD	5" OD	60"

* All 5" OD stacks are compatible with Silverline Universal Stack Bases

Stack Mounting Clamps Sold Separately

LIGHT DIESEL MUFFLERS, PIPES & ACCESSORIES



PERFORMANCE DOWN PIPES

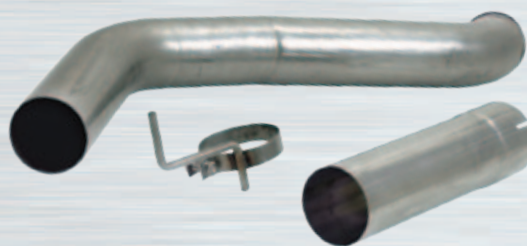
CHEVY/GMC

PART #	APPLICATION	YEAR	DESCRIPTION	MATERIAL
CS100FP	DURAMAX 6.6	2001-2005	FRONT BY-PASS KIT W/ 4-BOLT FLANGE	T304 Stainless

DODGE

PART #	APPLICATION	YEAR	DESCRIPTION	MATERIAL
DS101AFP	CUMMINS 5.9L	1994-2002	DOWNPIPE	Aluminized
DS105AFP	CUMMINS 5.9L 600	3/2004-2007	DOWNPIPE	Aluminized
DS101HX40	CUMMINS 5.9L w/HX40 TURBO	1994-2002	DOWNPIPE KIT* (INCL HANGER)	T304 Stainless
HX40GEN2	CUMMINS 5.9L w/HX40 TURBO	1994-2002	DOWNPIPE*	Aluminized

*Does not include Turbo Clamp



FORD

PART #	APPLICATION	YEAR	DESCRIPTION	MATERIAL
FS101AFP	FORD POWERSTROKE 7.3	1999-2002	DOWNPIPE	Aluminized



PERFORMANCE MUFFLERS



PART #	INLET & OUTLET ID	MUFFLER DIMENSION	OVERALL LENGTH	MATERIAL
UDM1	4"	6" X 24" BODY	30"	T304 Polished Stainless
UDM1409	4"	6" X 24" BODY	30"	409 Polished Stainless

SINGLE OUTLET MUFFLER ELIMINATOR PIPES



DODGE
T304 STAINLESS STEEL

PART #	REPLACES	YEAR	PIPE DIAMETER	SILVERLINE KIT CROSS-REFERENCE
DMPD	5.9L 600 FACTORY MUFFLER	3/2004 - 2007	4"	N/A
DMPS5	5.9L 600 MUFFLER - 5" ID	3/2004 - 2007	5"	DS107 SERIES
DMPSL	SINGLE OUTLET MUFFLER - 36"	1994-2007	4"	DS101, DS103, DS105 SERIES

CHEVY/GM/FORD
(T304 STAINLESS STEEL)

PART #	REPLACES	YEAR	PIPE DIAMETER	SILVERLINE KIT CROSS-REFERENCE
DMPSS	SINGLE OUTLET MUFFLER - 30"	2001-2007 Chevy 1999-2007 Ford	4"	CS101,CS102,FS101,FS102, FS103,FS104,FS108 SERIES

LIGHT DIESEL MUFFLERS, PIPES & ACCESSORIES



DUAL OUTLET MUFFLER ELIMINATOR PIPES

CHEVY/GM/DODGE
T304 STAINLESS STEEL

PART #	REPLACES	YEAR	PIPE DIAMETER	SILVERLINE KIT CROSS-REFERENCE
DMPDM	DUAL OUTLET MUFFLER - 30"	1994-2007	4"	CS103, CS104, DS104 SERIES

DODGE

PART #	REPLACES	YEAR	PIPE DIAMETER	SILVERLINE KIT CROSS-REFERENCE
DMPDL	DUAL OUTLET MUFFLER - 36"	2003-2007	4"	DS102 and DS106 SERIES

FORD

PART #	REPLACES	YEAR	PIPE DIAMETER	SILVERLINE KIT CROSS-REFERENCE
DMPDS	DUAL OUTLET MUFFLER - 28"	1999-2007	4"	FS105, FS106, FS107 SERIES

CLAMPS & HANGERS

CLAMPS

PART NUMBER	SIZE	DESCRIPTION	APPLICATION
312C	3 1/2"	SADDLE CLAMP	UNIVERSAL
4C	4"	SADDLE CLAMP	UNIVERSAL
5C	5"	SADDLE CLAMP	UNIVERSAL

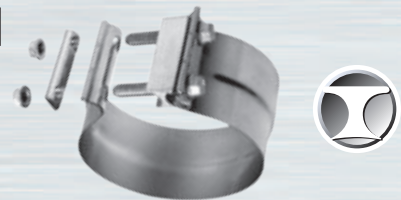


FLATBAND EXHAUST CLAMPS

PART NUMBER	SIZE	MATERIAL
AS400	4"	ALUMINIZED STEEL
AS500	5"	ALUMINIZED STEEL
SAS400	4"	BRIGHT 430 STAINLESS STEEL
SAS500	5"	BRIGHT 430 STAINLESS STEEL
SAS600	6"	BRIGHT 430 STAINLESS STEEL

TORCTITE™ PREFORMED CLAMPS - LAP JOINT

PART NUMBER	SIZE	MATERIAL
9623	4"	BRIGHT 304 STAINLESS STEEL
9606	4"	ALUMINIZED STEEL
9624	5"	BRIGHT 304 STAINLESS STEEL
9607	5"	ALUMINIZED STEEL
9671	6"	BRIGHT 304 STAINLESS STEEL



EASYSEAL™ FLATBAND EXHAUST CLAMPS

PART NUMBER	SIZE	MATERIAL
B300	3"	BRIGHT 304 STAINLESS STEEL
B312	3 1/2"	BRIGHT 304 STAINLESS STEEL
B400	4"	BRIGHT 304 STAINLESS STEEL
B500	5"	BRIGHT 304 STAINLESS STEEL
B600	6"	BRIGHT 304 STAINLESS STEEL

LIGHT DIESEL MUFFLERS, PIPES & ACCESSORIES

CLAMPS & HANGERS

EXTRA HEAVY DUTY CLAMPS $\frac{3}{8}$ " U-BOLT 11 GAUGE SADDLE

PART NUMBER	PART NUMBER ZINC	SIZE
H300*	H300Z	3"
H314*	—	3 $\frac{1}{4}$ "
H312*	—	3 $\frac{1}{2}$ "
H400*	H400Z	4"
H412*	—	4 $\frac{1}{2}$ "
H500*	H500Z	5"
H600*	H600Z	6"



*Welded Saddle

TURBO CLAMPS STAINLESS STEEL

PART NUMBER	SIZE	DESCRIPTION	APPLICATION
TCF1	Factory Specs	TURBO CLAMP	1999-2002 POWERSTROKE 7.3
TCF2	Factory Specs	TURBO CLAMP	2003-2006 POWERSTROKE 6.0



HANGER KIT - DODGE

PART NUMBER	SIZE	DESCRIPTION	APPLICATION
DTH1	N/A	TAILPIPE HANGER KIT	1994-1997 CUMMINS 5.9

Includes 2 rubber Mounts and Hanger



UNIVERSAL ADAPTERS

CONVERTER ADAPTER KITS T304 STAINLESS STEEL

PART NUMBER	INLET	OUTLET	OVERALL LENGTH	INCLUDES
DCK1	3.5" ID	4" ID	6"	Includes 2 Adapters and 4 Clamps
DCK2	4" ID	4" ID	6"	Includes 2 Adapters and 4 Clamps
DCK3	4" ID	4" OD	6"	Includes 1 Adapter and 1 Clamp

For Street-Legal Conversion of Off-Road and Racing kits



DCK 1



DCK 2

SINGLE ADAPTERS

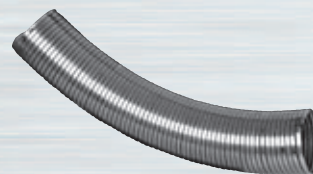
PART NUMBER	INLET	OUTLET	OVERALL LENGTH	MATERIAL
DCK4	3.5" ID	4" OD	6"	Unpolished 409 stainless steel
DCK5	4" ID	5" OD	6"	Unpolished 409 stainless steel

UNIVERSAL STRAIGHT PIPE

PART NUMBER	INLET ID	OUTLET ID	OVERALL LENGTH	MATERIAL
SP48	4"	4"	48"	Polished 409 stainless steel

UNIVERSAL FLEX HOSE

PART NUMBER	DIAMETER	LENGTH	MATERIAL
24677	4"	18"	T304 Stainless Steel
24836	4"	24"	T304 Stainless Steel
34673	4"	36"	T304 Stainless Steel
14737	5"	12"	T304 Stainless Steel
24678	5"	18"	T304 Stainless Steel
24838	5"	24"	T304 Stainless Steel
34674	5"	36"	T304 Stainless Steel



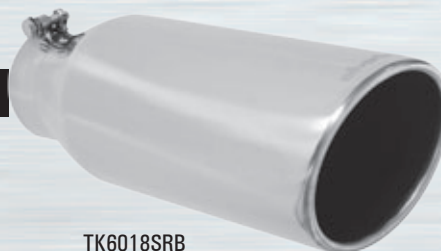
ADDITIONAL ACCESSORIES & SIZES AVAILABLE: ADAPTORS • ELBOWS • STRAIGHT TUBING • BULK FLEX

SILVERLINE TIPS WITH LOGO

DIESEL TRUCK TIPS - T304 STAINLESS

ROLLED ANGLE TRUCK TIPS

PART NO.	INLET ID	OUTLET DIAMETER	OVERALL LENGTH
TK4012SR35	3 1/2"	4"	12" Without Bolt
TK5012SR	4"	5"	12" Without Bolt
TK5012SRB	4"	5"	12" With Bolt
TK5012SRB5	5"	5"	12" With Bolt
TK6018SRB	4"	6"	18" With Bolt
TK6018SRB5	5"	6"	18" With Bolt



TK6018SRB

All Silverline TK Tips are Premium Quality T304 Polished Stainless and feature the Silverline™ Logo.



DOUBLE WALL TRUCK TIPS

PART NO.	INLET ID	OUTLET DIAMETER	OVERALL LENGTH
TK5012DWB	4"	5"	12" Pencil Cut with Bolt
TK5012DWBS	4"	5"	12" Slant Cut with Bolt

All Silverline TK Tips are Premium Quality T304 Polished Stainless and feature the Silverline™ Logo.

TURN DOWN TRUCK TIPS

PART NO.	INLET ID	OUTLET DIAMETER	OVERALL LENGTH
TK4012TDB	4"	4"	12" With Bolt
TK5012TDB4	4"	5"	12" With Bolt

All Silverline TK Tips are Premium Quality T304 Polished Stainless and feature the Silverline™ Logo.



SILVERLINE TIPS **NO LOGO**

DIESEL TRUCK TIPS - T304 STAINLESS



INSIDE ROLL - STRAIGHT CUT TIPS

PART NO.	INLET ID	OVERALL SIZE
XSBRPT50124	4" Bolt On	12" x 5"
XSBRPT50125	5" Bolt On	12" X 5"



INSIDE ROLL - ANGLE CUT TIPS

PART NO.	INLET ID	OVERALL SIZE
XSBRAC40124	4" Bolt On	12" x 4"
XSBRAC50124	4" Bolt On	12" x 5"
XSBRAC50125	5" Bolt On	12" x 5"
XSBRAC50184	4" Bolt On	18" x 5"
XSBRAC50185	5" Bolt On	18" x 5"
SV5012SR	4" No Bolt	12" x 5"

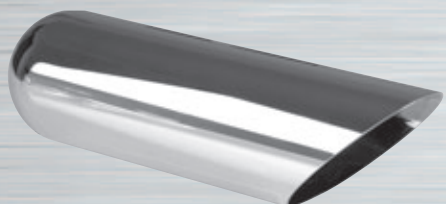


TURN-DOWN TIPS

PART NO.	INLET ID	OVERALL SIZE
XSTD300	3"	16" x 3"
XSTD312	3 1/2"	16" X 3 1/2"
XSTD400	4"	18" x 4"

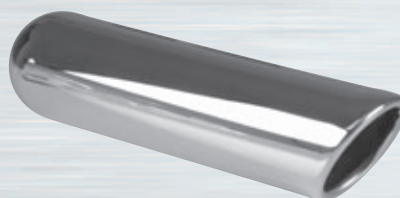
SILVERLINE TIPS **NO LOGO**

DIESEL TRUCK TIPS - CHROME



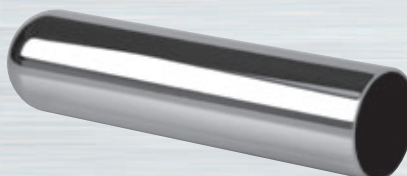
45° ANGLE CUT TIPS

PART NO.	INLET ID	OVERALL SIZE
XAC3163	3"	16" x 3"
XAC3223	3"	22" x 3"
XAC312163	3"	16" x 3 ½"
XAC312223	3"	22" x 3 ½"
XAC412312	3 ½"	12" x 4"
XAC4124	4"	12" x 4"
XAC416312	3 ½"	16" x 4"
XAC4183	3"	18" x 4"
XAC4184	4"	18" x 4"
XAC4223	3"	22" x 4"
XAC5124	4"	12" x 5"
XAC5184	4"	18" x 5"
XAC6184	4"	18" x 6"



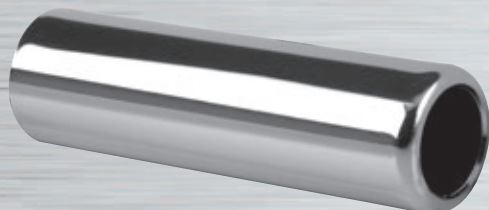
INSIDE ROLL - ANGLE CUT TIPS

PART NO.	INLET ID	OVERALL SIZE
XRAC312123	3"	12" x 3 ½"



PENCIL TIPS

PART NO.	INLET ID	OVERALL SIZE
XPT3123	3"	12" x 3"
XPT3203	3"	20" x 3"
XPT312123	3"	12" x 3 ½"
XPT312203	3"	20" x 3 ½"
XPT4124	4"	12" x 4"
XPT4184	4"	18" x 4"



INSIDE ROLL - PENCIL TIPS

PART NO.	INLET ID	OVERALL SIZE
XRPT35123	3"	12" x 3 ½"
XRPT4012312	3 ½"	12" x 4"

TAIL SPOUTS

PART NO. ALUMINIZED STYLE A (OD)	PART NO. CHROME STYLE A (OD)	PART NO. ALUMINIZED STYLE B (ID)	PART NO. CHROME STYLE B (ID)	DIAMETER	LENGTH
24344	--	14618	814621	3"	12"
--	--	--	824000	3"	18"
24345	--	14619	814622	3½"	12"
--	--	24938	824001	3½"	18"
24346	--	14620	814620	4"	12"
24717	824720	24713	824718	4"	18"
24718	824723	24714	824717	5"	18"
24347	--	24672	824673	5"	20"
--	--	24696	--	6"	20"



STYLE A



STYLE B

Recommended for passenger cars and trucks not equipped with a tail pipe. Can also be used with tractor mufflers to deflect exhaust gases away from the operator. For horizontal or vertical mounting.