

AN BANJO FITTINGS AND BOLT SETS (WITH ALUMINUM CRUSH WASHERS)

NEW



*Fully assembled

Part No.	Male Banjo Size	Banjo Bolt Size
11500	-3AN	M8 x 1.0
11501	-3AN	M8 x 1.25
11502	-3AN	M10 x 1.0
11503	-3AN	M10 x 1.5
11504	-3AN	M12 x 1.0
11505	-3AN	M12 x 1.5
11510	-4AN	M8 x 1.0
11511	-4AN	M8 x 1.25
11512	-4AN	M10 x 1.0
11513	-4AN	M10 x 1.5
11514	-4AN	M12 x 1.0
11515	-4AN	M12 x 1.5

Part No.	Male Banjo Size	Banjo Bolt Size
11520	-6AN	M10 x 1.0
11521	-6AN	M10 x 1.5
11522	-6AN	M12 x 1.0
11523	-6AN	M12 x 1.5
11524	-6AN	M14 x 1.5
11525	-6AN	M16 x 1.5
11530	-8AN	M10 x 1.0
11531	-8AN	M10 x 1.5
11532	-8AN	M12 x 1.0
11533	-8AN	M12 x 1.5
11534	-8AN	M14 x 1.5
11535	-8AN	M16 x 1.5

AN TO METRIC STRAIGHT ADAPTERS

*NEW SIZES ADDED



Part No.	AN Size	Metric Size
16615	-6AN	M12 x 1.25
16620	-6AN	M20 x 1.5
16621	-6AN	M22 x 1.5
16622	-8AN	M10 x 1.5
16623	-8AN	M12 x 1.25
16628	-8AN	M20 x 1.5
16629	-8AN	M22 x 1.5

Part No.	AN Size	Metric Size
16637	-10AN	M22 x 1.5
16638	-10AN	M24 x 1.5
16646	-12AN	M22 x 1.5
16647	-12AN	M24 x 1.5
16649	-16AN	M22 x 1.5

FEMALE AN TO MALE AN STRAIGHT CUT (WITH O-RING)

NEW



Part No.	Female AN	Male AN Straight Thread
16860	-6AN	9/16-18 (6AN)
16861	-6AN	3/4-16 (8AN)
16862	-8AN	9/16-18 (6AN)
16863	-8AN	3/4-16 (8AN)
16864	-8AN	7/8-14 (10AN)
16866	-10AN	3/4-16 (8AN)
16867	-10AN	7/8-14 (10AN)
16868	-10AN	1 1/6-12 (12AN)
16870	-12AN	7/8-14 (10AN)
16871	-12AN	1 1/6-12 (12AN)

METRIC TO HOSE BARB FITTINGS (WITH CRUSH WASHER)

NEW



Part No.	Metric Size	Hose Size
11410	M10 x 1.0	5/16" (8mm)
11412	M12 x 1.5	5/16" (8mm)
11413	M12 x 1.5	3/8" (9.5mm)
11414	M12 x 1.5	1/2" (12.7mm)
11415	M14 x 1.5	5/16" (8mm)
11416	M14 x 1.5	3/8" (9.5mm)
11417	M14 x 1.5	1/2" (12.7mm)

FEMALE TO MALE METRIC UNION EXTENDERS (WITH THREE X 1/8" NPT PORTS)

NEW



Part No.	Female Size	Male Size
10595	M12 x 1.5	M12 x 1.5
10596	M14 x 1.5	M14 x 1.5
10597	M16 x 1.5	M16 x 1.5

METRIC PORT PLUGS (WITH CRUSH WASHER)

NEW



Part No.	Size
16660	M10 x 1.0
16661	M10 x 1.25
16662	M12 x 1.5
16663	M14 x 1.5
16664	M16 x 1.5
16665	M18 x 1.5

90° TIGHT RADIUS FORGED HOSE END FITTINGS

NEW



Part No.	Size
21986	-6AN
21988	-8AN
21990	-10AN
21992	-12AN
21996	-16AN

MALE AN FLARE STRAIGHT HOSE END FITTING

***NEW SIZES ADDED**



Part No.	Hose Size	Male Flare
24016	-16AN	-16AN

MALE AN 45° HOSE END FITTINGS (WITH O-RING)

***NEW SIZES ADDED**



Part No.	Hose Size	Male Thread
24412	-16AN	1 1/6 -12 (12AN)
24414	-16AN	1 5/16 - 12 (16AN)

MALE AN 90° HOSE END FITTINGS (WITH O-RING)

***NEW SIZES ADDED**



Part No.	Hose Size	Male Thread
24912	-16AN	1 1/6 -12 (12)AN
24914	-16AN	1 5/16 - 12 (16AN)

MALE NPT STRAIGHT HOSE END FITTING

***NEW SIZES ADDED**



Part No.	Hose Size	Pipe Thread
26010	-16AN	3/4" NPT

MALE NPT 45° HOSE END FITTING

***NEW SIZES ADDED**



Part No.	Hose Size	Pipe Thread
26410	-16AN	3/4" NPT

MALE NPT 90° HOSE END FITTING

***NEW SIZES ADDED**



Part No.	Hose Size	Pipe Thread
26910	-16AN	3/4" NPT

30° PUSH ON HOSE END FITTINGS

NEW



Part No.	Size
22304	-4AN
22306	-6AN
22308	-8AN
22310	-10AN
22312	-12AN

60° PUSH ON HOSE END FITTINGS

NEW



Part No.	Size
22604	-4AN
22606	-6AN
22608	-8AN
22610	-10AN
22612	-12AN

ONE WAY CHECK VALVE (AN TO AN)

***NEW SIZES ADDED**



Part No.	Size
11196	-16AN

FUEL PUMP CHECK VALVES (AN TO METRIC, WITH CRUSH WASHER)

NEW



Part No.	AN Size	Metric Size
11198	-6AN	M12 x 1.5
11199	-8AN	M12 x 1.5

ADJUSTABLE INLINE ONE WAY CHECK VALVES (MALE TO FEMALE AN)

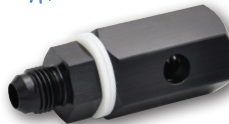
NEW



Part No.	Male Inlet Size	Female Outlet Size
11116	-6AN	-6AN
11118	-8AN	-8AN

ROLLOVER VALVES

NEW



Part No.	Size
16716	-6AN
16718	-8AN
16720	-10AN
16722	-12AN

"Protect yourself in the event of a vehicle rollover and ensure your fuel stays in the fuel tank, where it belongs."

QUICK DISCONNECT EFI ADAPTER

***NEW SIZES ADDED**



Part No.	AN Size	Hose Size
16887	-8AN	3/8"

FUEL CELL BULKHEAD ADAPTER (WITH WASHERS AND NUT)

***NEW SIZES ADDED**



Part No.	AN Size
16896	-16AN

MALE AN UNION ADAPTER (WITH 1/8" NPT PORT)

***NEW SIZES ADDED**



Part No.	AN Size
16480	-10AN

FEMALE TO MALE AN UNION ADAPTER (WITH 1/8" NPT PORT)

***NEW SIZES ADDED**



Part No.	Male Size	Female Size
16490	-10AN	-10AN

MALE AN 90° UNION ADAPTERS (WITH 1/8" NPT PORT)

NEW



Part No.	Size
16536	-6AN
16538	-8AN

MALE AN TEE ADAPTERS (WITH 1/8" NPT PORT)

NEW



Part No.	Size
16546	-6AN
16548	-8AN

INLINE OIL / FUEL FILTER SETS
 INCLUDES 30, 80 & 150 MICRON FILTER ELEMENTS
 AS WELL AS MALE AND FEMALE ADAPTERS FOR
 ULTIMATE FLEXIBILITY



Part No.	AN Size
16733	-3AN
16734	-4AN
16736	-6AN
16738	-8AN

Please Note:
 - 30 micron element is best suited for light weight engine oil or pump gas.
 - 80 micron element is recommended for heavy weight engine oil, diesel, alcohol or ethanol fuel.
 -150 micron element is for use with power steering and transmission oil

MALE NPT TO HOSE BARB STRAIGHT ADAPTER

***NEW SIZES ADDED**



Part No.	NPT Size	Hose Size
11205	3/8"	3/8"

MALE NPT TO HOSE BARB 45° ADAPTER

***NEW SIZES ADDED**



Part No.	NPT Size	Hose Size
11225	3/8"	3/8"

MALE NPT TO HOSE BARB 90° ADAPTER

***NEW SIZES ADDED**



Part No.	NPT Size	Hose Size
11235	3/8"	3/8"

FEMALE AN TO MALE HOSE BARB STRAIGHT ADAPTERS

NEW



Part No.	NPT Size	Hose Size
11215	-6AN	5/16"
11216	-6AN	3/8"
11218	-8AN	1/2"

MALE BARBED COUPLER ADAPTERS
 (STRAIGHTS AND TRANSITIONS)

NEW



Part No.	Hose Size
11240	-4AN (0.22" ID)
11241	-6AN (0.34" ID)
11242	-8AN (0.44" ID)
11243	-10AN (0.56" ID)
11244	-12AN (0.68" ID)
11245	-6AN to -8AN
11246	-8AN to -10AN
11247	-10AN to -12AN

INLINE BARBED UNION ADAPTERS
 (WITH 1/8" NPT PORT)

NEW



Part No.	Hose Size
16470	5/16" ID
16471	3/8" ID

BARBED WELD ON BUNGS - ALUMINUM

NEW



Part No.	Hose Size
11180	1/4" ID
11181	3/8" ID
11182	1/2" ID
11183	5/8" ID
11184	3/4" ID

BARBED WELD ON BUNGS - MILD STEEL

NEW



Part No.	Hose Size
11280	1/4" ID
11281	3/8" ID
11282	1/2" ID
11283	5/8" ID
11284	3/4" ID

FLARE UNION REDUCER ADAPTERS (MALE AN)

*NEW SIZES ADDED



Part No.	Size
10427	-20AN x -12AN
10428	-8AN x -4AN

45° FLARE UNION ADAPTERS (MALE AN)

NEW



Part No.	Size
10570	-3AN
10571	-4AN
10572	-6AN
10573	-8AN
10574	-10AN
10575	-12AN
10576	-16AN

FEMALE 45° UNION ADAPTER (AN TO AN)

*NEW SIZES ADDED



Part No.	Size
10716	-16AN

FEMALE 90° UNION ADAPTER (AN TO AN)

*NEW SIZE *NEW SIZES ADDED



Part No.	Size
10736	-16AN

FEMALE TO MALE REDUCER ADAPTERS (AN TO AN)

*NEW SIZES ADDED



Part No.	Female Size	Male Size
10836	-12AN	-8AN
10838	-16AN	-12AN
10839	-20AN	-16AN

FEMALE TO MALE EXPANDER ADAPTER (AN TO AN)

*NEW SIZE



Part No.	Female Size	Male Size
10846	-16AN	-20AN

FEMALE TO MALE 45° SWIVEL ADAPTERS (AN TO AN)

NEW



Part No.	Female Size	Male Size
10770	-3AN	-3AN
10771	-4AN	-4AN
10772	-6AN	-6AN
10773	-8AN	-8AN
10774	-10AN	-10AN
10775	-12AN	-12AN
10776	-16AN	-16AN

FEMALE TO MALE 90° SWIVEL ADAPTERS (AN TO AN)

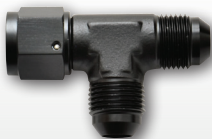
NEW



Part No.	Female Size	Male Size
10780	-3AN	-3AN
10781	-4AN	-4AN
10782	-6AN	-6AN
10783	-8AN	-8AN
10784	-10AN	-10AN
10785	-12AN	-12AN
10786	-16AN	-16AN

TEE ADAPTERS WITH FEMALE SWIVEL ON RUN (AN TO AN)

NEW



Part No.	Female Size	Male Size
10740	-3AN	-3AN
10741	-4AN	-4AN
10742	-6AN	-6AN
10743	-8AN	-8AN
10744	-10AN	-10AN
10745	-12AN	-12AN
10746	-16AN	-16AN

TEE ADAPTERS WITH FEMALE SWIVEL ON SIDE (AN TO AN)

NEW



Part No.	Female Size	Male Size
10790	-3AN	-3AN
10791	-4AN	-4AN
10792	-6AN	-6AN
10793	-8AN	-8AN
10794	-10AN	-10AN
10795	-12AN	-12AN
10796	-16AN	-16AN

90° SWIVEL ADAPTERS (MALE AN TO MALE NPT)

NEW



Part No.	AN Size	NPT Size
11350	-3AN	1/8" NPT
11351	-4AN	1/8" NPT
11352	-4AN	1/4" NPT
11353	-6AN	1/8" NPT
11354	-6AN	1/4" NPT
11355	-6AN	3/8" NPT
11356	-8AN	1/4" NPT
11357	-8AN	3/8" NPT
11358	-8AN	1/2" NPT
11359	-10AN	3/8" NPT
11360	-10AN	1/2" NPT
11361	-12AN	1/2" NPT
11362	-12AN	3/4" NPT

STRAIGHT SWIVEL ADAPTERS (FEMALE AN TO MALE NPT)

NEW



Part No.	AN Size	NPT Size
11365	-3AN	1/8" NPT
11366	-4AN	1/8" NPT
11367	-4AN	1/4" NPT
11368	-6AN	1/8" NPT
11369	-6AN	1/4" NPT
11370	-6AN	3/8" NPT
11371	-8AN	1/4" NPT
11372	-8AN	3/8" NPT
11373	-8AN	1/2" NPT
11374	-10AN	3/8" NPT
11375	-10AN	1/2" NPT
11376	-12AN	1/2" NPT
11377	-12AN	3/4" NPT

90° SWIVEL ADAPTERS (FEMALE AN TO MALE NPT)

NEW



Part No.	AN Size	NPT Size
11380	-3AN	1/8" NPT
11381	-4AN	1/8" NPT
11382	-4AN	1/4" NPT
11383	-6AN	1/8" NPT
11384	-6AN	1/4" NPT
11385	-6AN	3/8" NPT
11386	-8AN	1/4" NPT
11387	-8AN	3/8" NPT
11388	-8AN	1/2" NPT
11389	-10AN	3/8" NPT
11390	-10AN	1/2" NPT
11391	-12AN	1/2" NPT
11392	-12AN	3/4" NPT

45° ADAPTERS (MALE AN TO NPT)

***NEW SIZES ADDED**



Part No.	Size
10238	-4AN x 1/4" NPT
10239	-6AN x 1/8" NPT
10247	-8AN x 1/2" NPT
10248	-10AN x 3/8" NPT

MALE PIPE ADAPTER

***NEW SIZES ADDED**



Part No.	Size
10375	1" NPT

FEMALE 90° PIPE COUPLERS

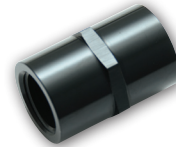
NEW



Part No.	Size
11320	1/8" NPT
11321	1/4" NPT
11322	3/8" NPT
11323	1/2" NPT

FEMALE PIPE COUPLER

***NEW SIZES ADDED**



Part No.	Size
10385	1" NPT

45° PIPE ADAPTERS (FEMALE NPT TO MALE NPT)

NEW



Part No.	Female Size	Male Size
11330	1/8" NPT	1/8" NPT
11331	1/4" NPT	1/4" NPT
11332	3/8" NPT	3/8" NPT
11333	1/2" NPT	1/2" NPT

90° PIPE ADAPTERS (FEMALE NPT TO MALE NPT)

NEW



Part No.	Female Size	Male Size
11340	1/8" NPT	1/8" NPT
11341	1/4" NPT	1/4" NPT
11342	3/8" NPT	3/8" NPT
11343	1/2" NPT	1/2" NPT

45° BULKHEAD ADAPTER (MALE AN)

***NEW SIZES ADDED**



Part No.	Size
10606	-16AN

90° BULKHEAD ADAPTER (MALE AN)

***NEW SIZES ADDED**



Part No.	Size
10614	-16AN

BULKHEAD TEE ADAPTER (MALE AN)

***NEW SIZES ADDED**



Part No.	Size
10622	-16AN

BULKHEAD TEE ON RUN ADAPTER (MALE AN)

***NEW SIZES ADDED**



Part No.	Size
10630	-16AN

FEMALE TO MALE UNION EXTENDER ADAPTERS (AN TO AN)

NEW



Part No.	Female Size	Male Size	Extender Length
10585	-4AN	-4AN	1"
10586	-6AN	-6AN	1-1/8"
10587	-8AN	-8AN	1-1/2"
10588	-10AN	-10AN	1-1/2"
10589	-12AN	-12AN	1-1/2"
10590	-16AN	-16AN	1-1/2"

AN FLARE PLUG

***NEW SIZES ADDED**



Part No.	Size
10447	-20AN

FEMALE TO MALE NPT TIGHT 90° ADAPTER

NEW



Part No.	Female Size	Male Size
10825	1/8" NPT	1/8" NPT

FEMALE NPT TO MALE FLARE ADAPTERS

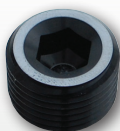
NEW



Part No.	Female Size	Male Size
11308	1/8" NPT	-3AN
11309	1/8" NPT	-4AN

SOCKET PIPE PLUG (NPT)

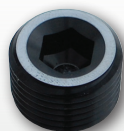
***NEW SIZES ADDED**



Part No.	Size
10495	1" NPT

HEX HEAD PIPE PLUGS (NPT)

NEW



Part No.	Size
10880	1/8" NPT
10881	1/4" NPT
10882	3/8" NPT
10883	1/2" NPT
10884	3/4" NPT

MALE BSP TO FEMALE NPT ADAPTER

NEW



Part No.	BSP Size	NPT Size
10399	1/8"	1/8"

AN TO INVERTED FLARE ADAPTER

NEW



Part No.	Size
16435	-6AN to 1/2 x 20
16436	-6AN to 5/8 x 18
16438	-8AN to 5/8 x 18

CHEVY LS ENGINE OIL PRESSURE ADAPTER

This new oil pressure adapter fitting allows you to retain the factory Oil Pressure switch (with M16 x 1.5 thread) while running an oil reference port to your turbo or any related accessory (e.g. oil pressure gauge). Port on fitting measures 1/8" NPT.

NEW



Part No. 16790

CHEVY LS ENGINE FUEL PRESSURE ADAPTER

NEW



This convenient new adapter fitting allows you to install an aftermarket fuel pressure gauge to your LS Engine's factory fuel rail (must remove Schrader valve)

This fitting features Female -4AN thread on one end and 1/8" NPT thread on the other, making it useful for many other applications as well.

Part No. 16791

HARDLINE PIPE CUTTING TOOL

Cut through steel, copper, aluminum and plastic tubing with ease and without distortion with Vibrant's new Hardline Cutter.

Designed for use on tubing measuring from 1/8" (3.175mm) to 1-1/8" (28.5mm) diameter

NEW



Part No. 2991